

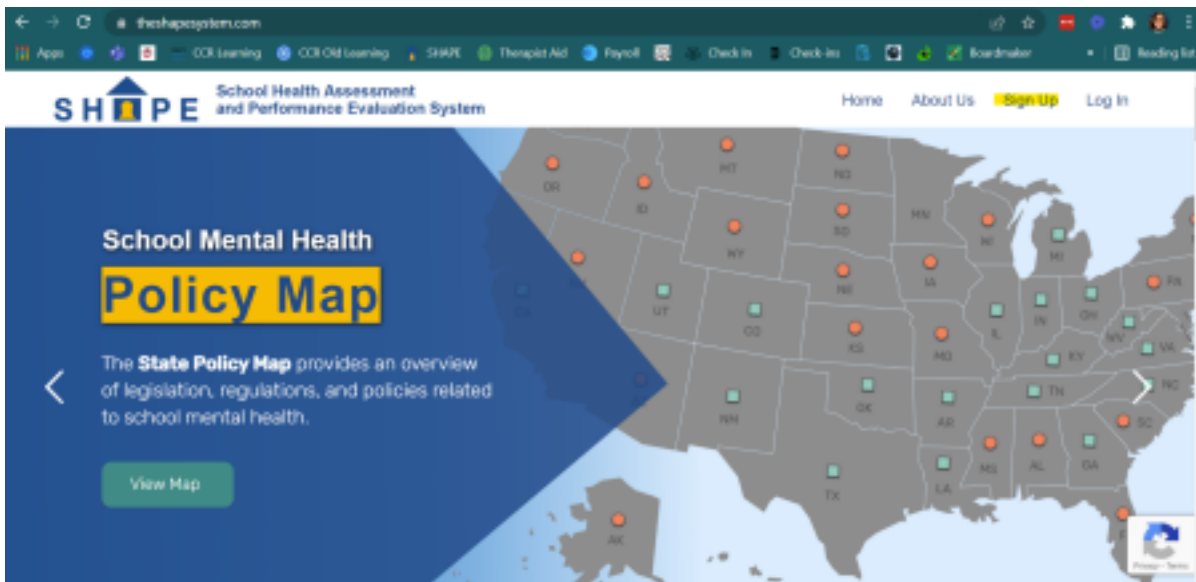
SHAPE Account Creation and TRS-IA Submission Tutorial

REACH Statewide Initiative 2022

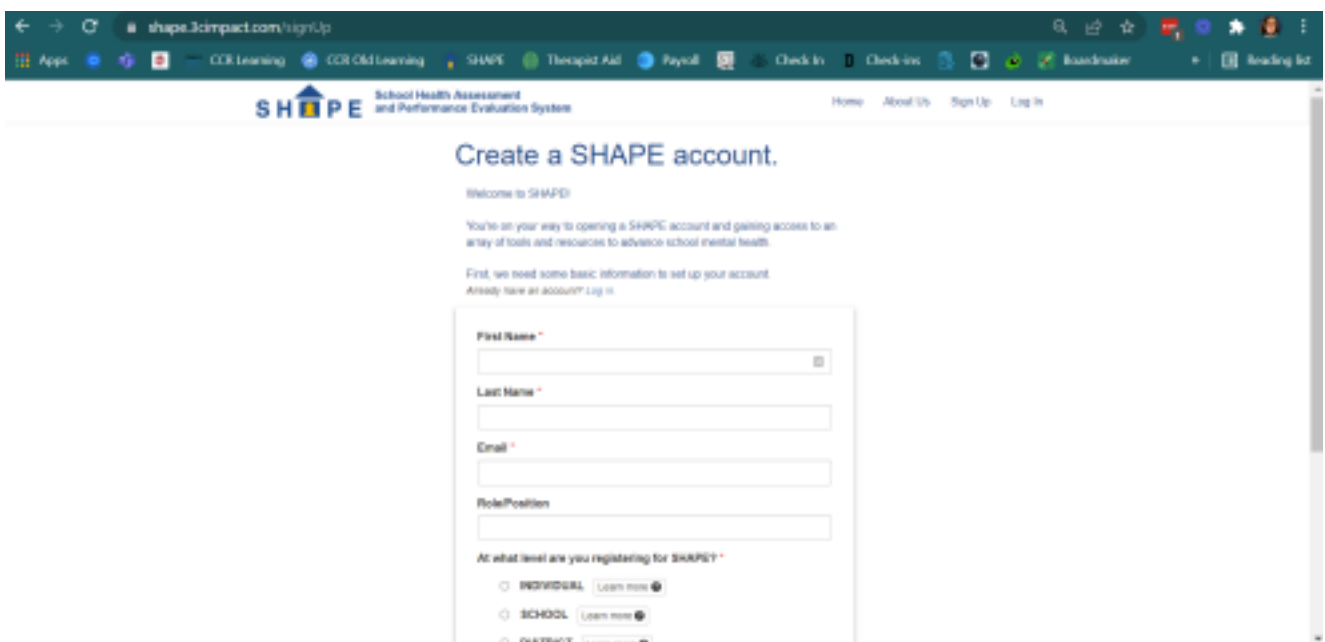
This document is to help school and district staff create a SHAPE account and enter in their TRS-IA score. For additional information and support please contact REACH@luriechildrens.org

Here is a link to a video tutorial demonstrating the steps below: [Link to Screen Sharing Tutorial Video](#)

- **Step 1:** Go to www.theshapesystem.com
- **Step 2:** Click “Sign Up” in the top right corner



- **Step 3:** Enter in your information



- **Step 4:** Complete a short survey

Registration

SHAPE Registration

We want to understand your perspective on school mental health in the school, district, or entity that you are most familiar with. Please answer these questions to the best of your knowledge. If you do not know the answer to a question, select "not sure."

Does your school mental health system have universal mental health screening and assessment?	Yes	No	Not sure
Does your school mental health system include universal mental health promotion services and supports at the school or grade level (Tier 1)?	Yes	No	Not sure
Does your school mental health system include selective services and prevention supports to students identified as being at risk for mental health concerns (Tier 2)?	Yes	No	Not sure
Does your school mental health system include indicated, individualized services and supports for students identified with mental health concerns (Tier 3)?	Yes	No	Not sure
Does your school mental health system include evidence-based practices and programs (as identified in the national evidence-based registries)?	Yes	No	Not sure
Does your school mental health system include community partnerships to augment school mental health services and supports provided by the school system?	Yes	No	Not sure

- **Step 5:** Select Trauma-Responsiveness from the Menu at the top

shape3compact.com/overview

SHAPE School Health Assessment and Performance Evaluation System

Home About Us My Account astanz@stressandtrauma.org

Overview School Mental Health Profile Mental Health Quality Resources Screening & Assessment **Trauma Responsiveness** My Districts My Schools My Entity Account

The Stress and Trauma Treatment Center - Southern IL

My Star Status
 View Star Sheet

Welcome to SHAPE! Explore all that SHAPE has to offer to improve your entity's school mental health systems.

School Mental Health Profile
Teams are encouraged to start with The School Mental Health Profile, which asks about the structure and operations of your school mental health system. This Profile is part of the National School Mental Health Census, an effort to capture the status of school mental health nationally.

Quality Assessment
The Quality Assessment will help your team assess the quality of your school mental health system based on seven domains. Teams receive a custom report based on responses.

Resource Center

© Ann & Robert H. Lurie Children's Hospital of Chicago. All rights reserved

- **Step 6:** Complete the survey for each of the 8 TRS-IA Domains until the entire TRS-IA is complete. Use the 2021-2022 School Year dates when prompted to select dates.

shape3impact.com/traumaResponsiveness

The School Mental Health Quality Assessment is designed for teams to assess the comprehensiveness of their school mental health system and to identify priority areas for improvement. The Quality Assessment is comprised of seven domains (Teaming, Needs Assessment/Resource Mapping, Screening, Mental Health Practices, Early Intervention and Treatment, Funding and Sustainability, Impact). Your team will receive custom reports as you complete each domain.

Portable Version

My Progress

Your entity's reporting period has not yet been entered. Please enter it now.
[Enter Reporting Period](#)

Whole School Safety Planning Take Survey View Report	Whole School Prevention Planning Take Survey View Report	Whole School Trauma Programming Take Survey View Report	Classroom Strategies Take Survey View Report
----------------------------------------------------------------	--------------------------------------------------------------------	-------------------------------------------------------------------	--------------------------------------------------------

