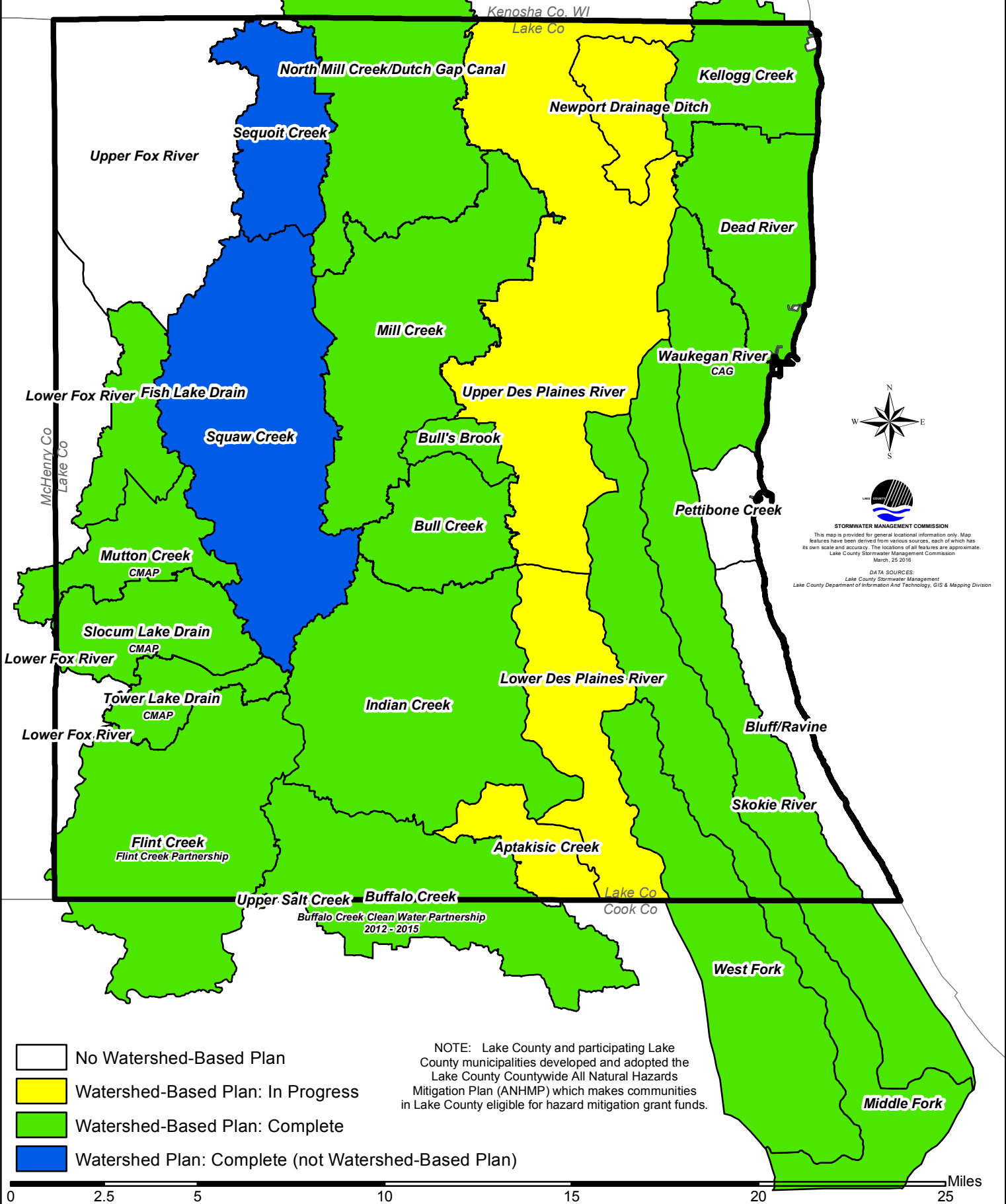


# Watershed-Based Plan Status\*

\*per sub-watershed as of March 2016



- No Watershed-Based Plan
- Watershed-Based Plan: In Progress
- Watershed-Based Plan: Complete
- Watershed Plan: Complete (not Watershed-Based Plan)

NOTE: Lake County and participating Lake County municipalities developed and adopted the Lake County Countywide All Natural Hazards Mitigation Plan (ANHMP) which makes communities in Lake County eligible for hazard mitigation grant funds.

**STORMWATER MANAGEMENT COMMISSION**  
 This map is provided for general locational information only. Map features have been derived from various sources, each of which has its own scale and accuracy. The locations of all features are approximate.  
 Lake County Stormwater Management Commission  
 March, 25 2016

**DATA SOURCES:**  
 Lake County Stormwater Management  
 Lake County Department of Information and Technology, GIS & Mapping Division